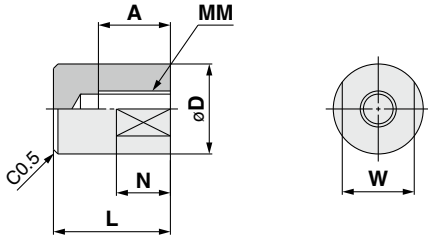


CJP Series

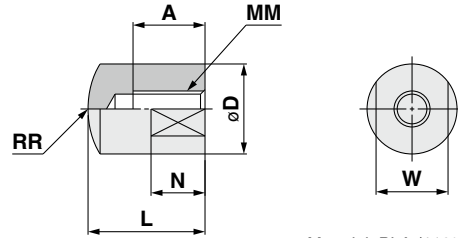
Accessory Bracket Dimensions

Rod End Cap

Flat Type: CJ-CF□



Round Type: CJ-CR□



Material: PLA (110°C) Dimension in

Part no.		Applicable bore size [mm]	A	D	L	MM	N	RR	W
Flat type	Round type								
CJ-CF004	CJ-CR004	4	5	6	9	M2 x 0.4	3	6	5
CJ-CF006	CJ-CR006	6	6	8	11	M3 x 0.5	5	8	6
CJ-CF010	CJ-CR010	10	8	10	13	M4 x 0.7	6	10	8
CJ-CF016	CJ-CR016	16	10	12	15	M5 x 0.8	7	12	10

* Rod end nut is not included when rod end cap is ordered individually. (Please use the rod end nut of the standard cylinder.)

* Applicable only for the rod end with the thread type